



[Calendar](#) [Members](#) [Search](#) [Help](#)

Logged in as: [DJ Cleberson](#) ([Log Out](#)) [My Controls](#) · [View New Posts](#) · [My Assistant](#) · [My Friends](#) · [0 New Messages](#)

► [Invision Power Board](#) > [Help Desk](#) > [Innofader Help](#)

[+ ADDREPLY](#) [NEWTOPIC](#)

Pioneer DJM 2000 Innobender Installation

[Options](#) ▼

[DJ Roc-it Ronge](#)

Dec 18 2011, 08:26 AM

Post #1

Reduced: 56% of original size [900 x 675] - [Click to view full image](#)

Newbie



Group: Members

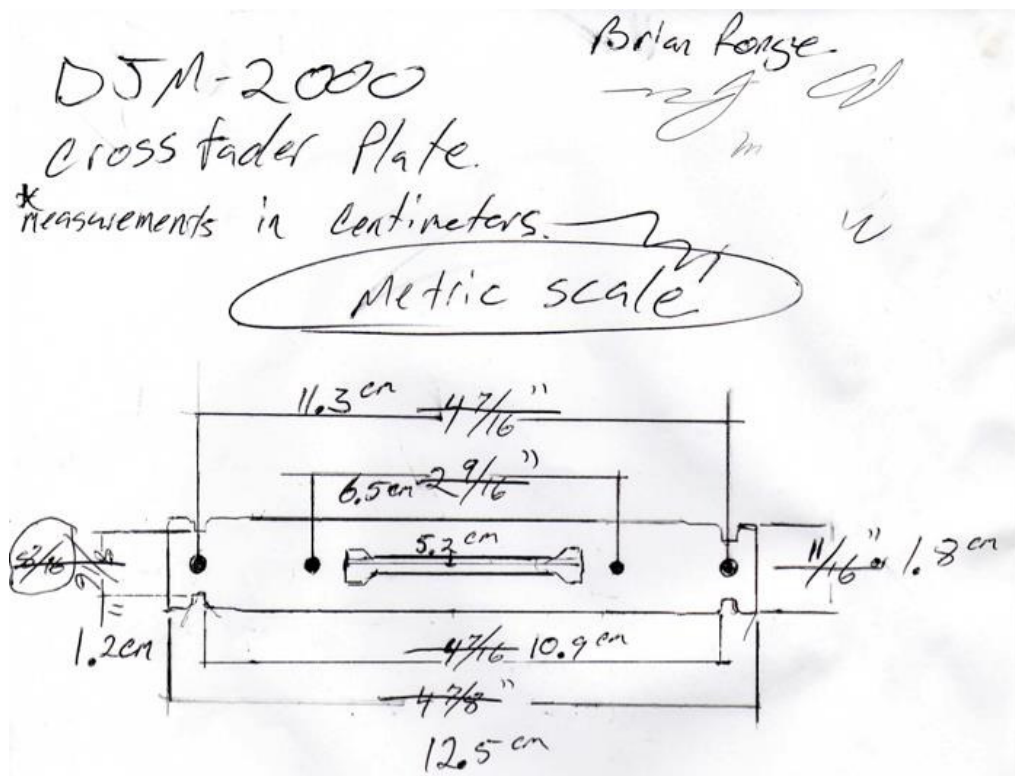
Posts: 1

Joined: 14-January 09


Member No.: 16,236




Reduced: 73% of original size [696 x 960] - [Click to view full image](#)



Mark & Drill two holes in the original Pioneer fader plate. Use the DJM 400 or DJM 800 innofader plate as a template to mark your holes, or use the measurements provided in the sketch (above) Drill bit size 1/8 U.S Standard or Metric equivalent 3.17mm


 Reduced: 56% of original size [900 x 675] - Click to view full image

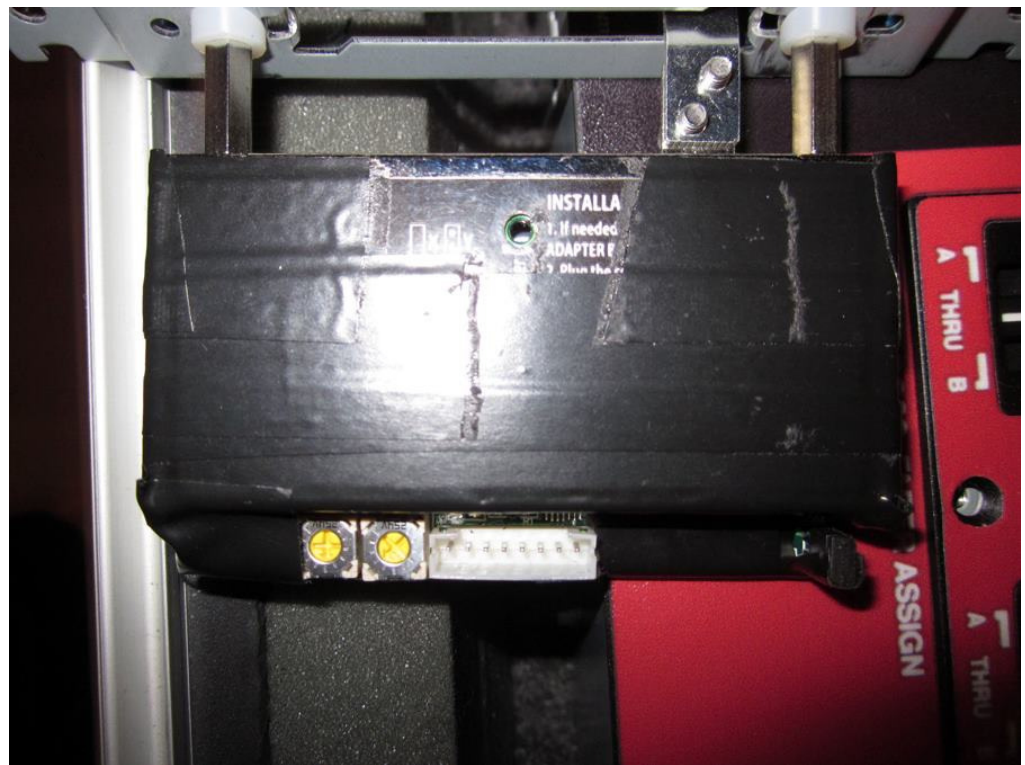


 Reduced: 56% of original size [900 x 675] - Click to view full image




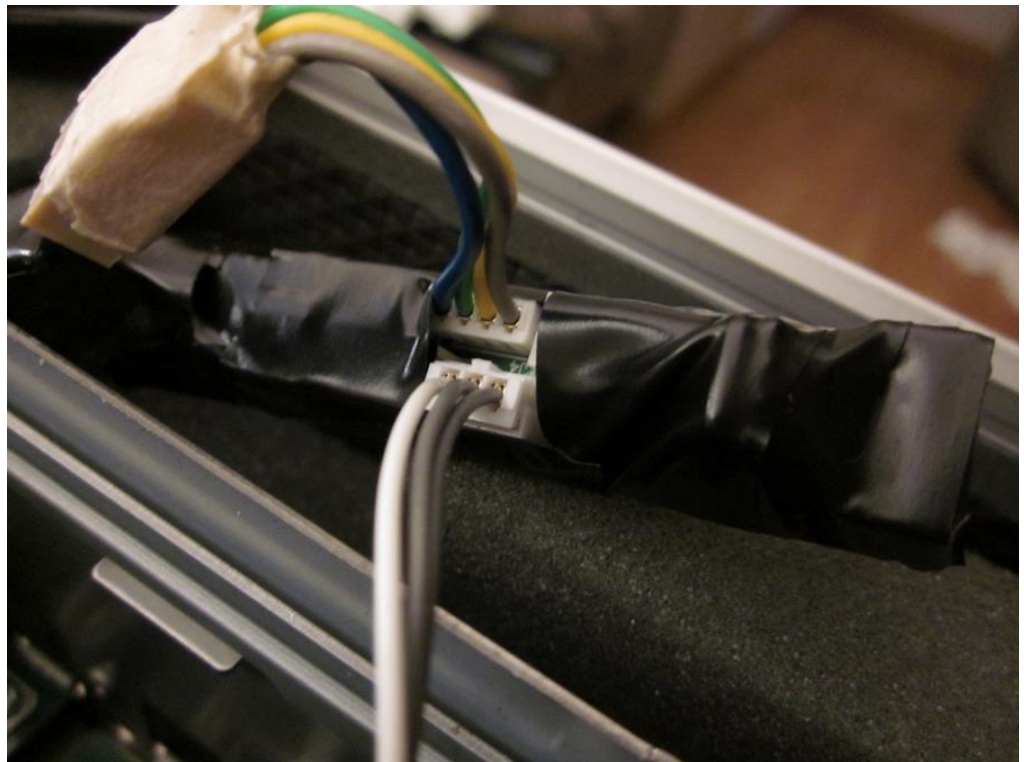
Insulate the entire innofader with electrical tape, leaving nothing exposed. The 20-degree innobender has a tight fit inside the DJM 2000 so this step is crucial. Follow the innobender instructions on the Innofader website. <http://innofader.com/installations.php?id=31&pid=11>
Use the short stem.

 Reduced: 56% of original size [900 x 675] - Click to view full image




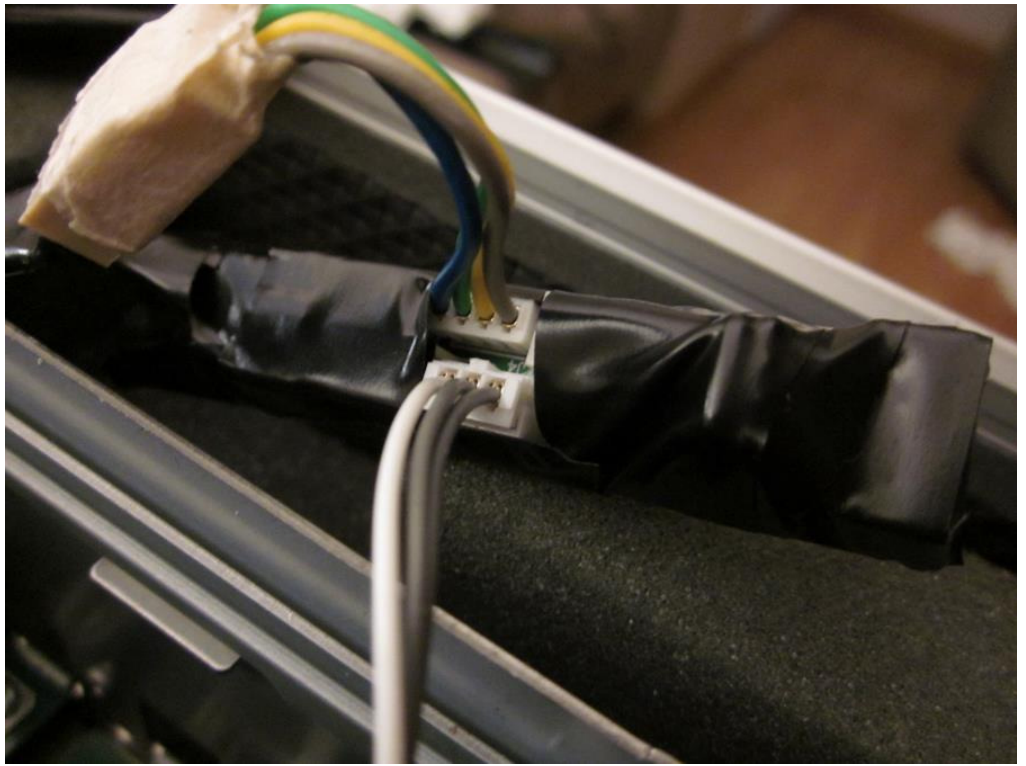
Secure the plastic jumper with electrical tape as well. This will prevent it from popping off during the installation.

 Reduced: 56% of original size [900 x 675] - Click to view full image




The Original Innofader, use the connector marked "UREI KORG". This connector has the power reversed, which is the correct setting for the DJM 2000.

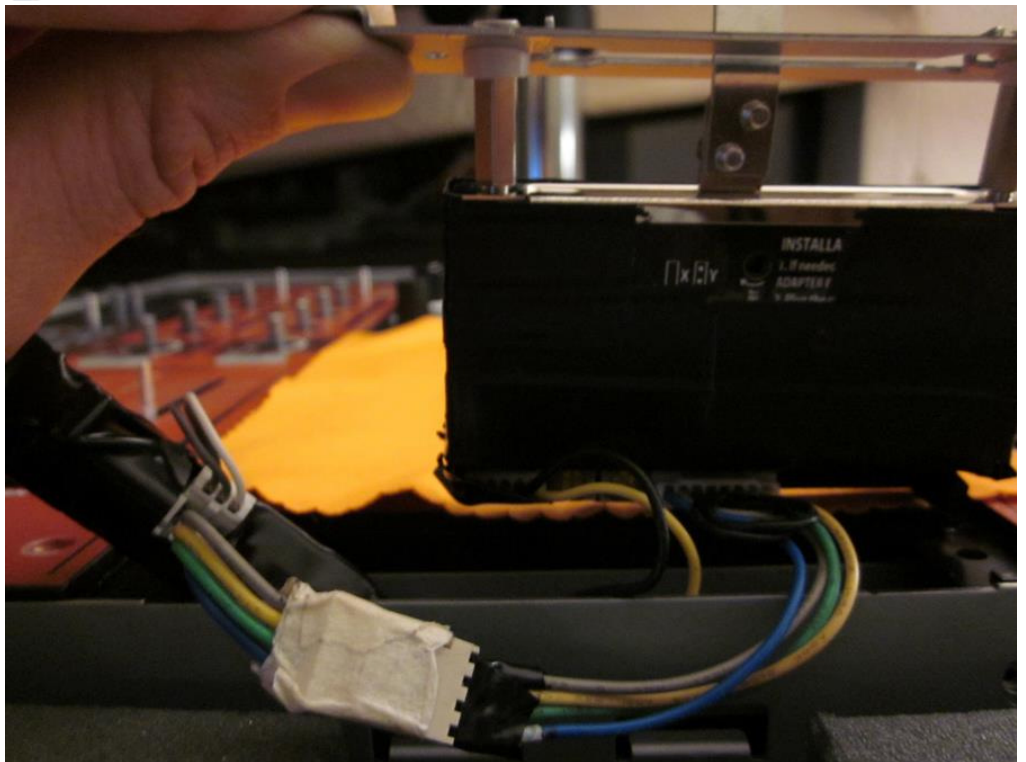
 Reduced: 56% of original size [900 x 675] - Click to view full image



Be sure to insulate the entire circuit board with electrical tape. Leave an opening for the two connectors, as shown.

***If you are installing using the Innofader Pro, hook up the crossfader connector directly to J17 on the Innofader. No polarity testing is required

 Reduced: 56% of original size [900 x 675] - [Click to view full image](#)




1)***NOTE: IF when inserting the Innofader, the connectors are facing the FRONT of the mixer, (towards you) as shown in the picture above) rather than Away (towards the Back of the mixer) the wire connections between the Innofader cable and adapter board are as follows:

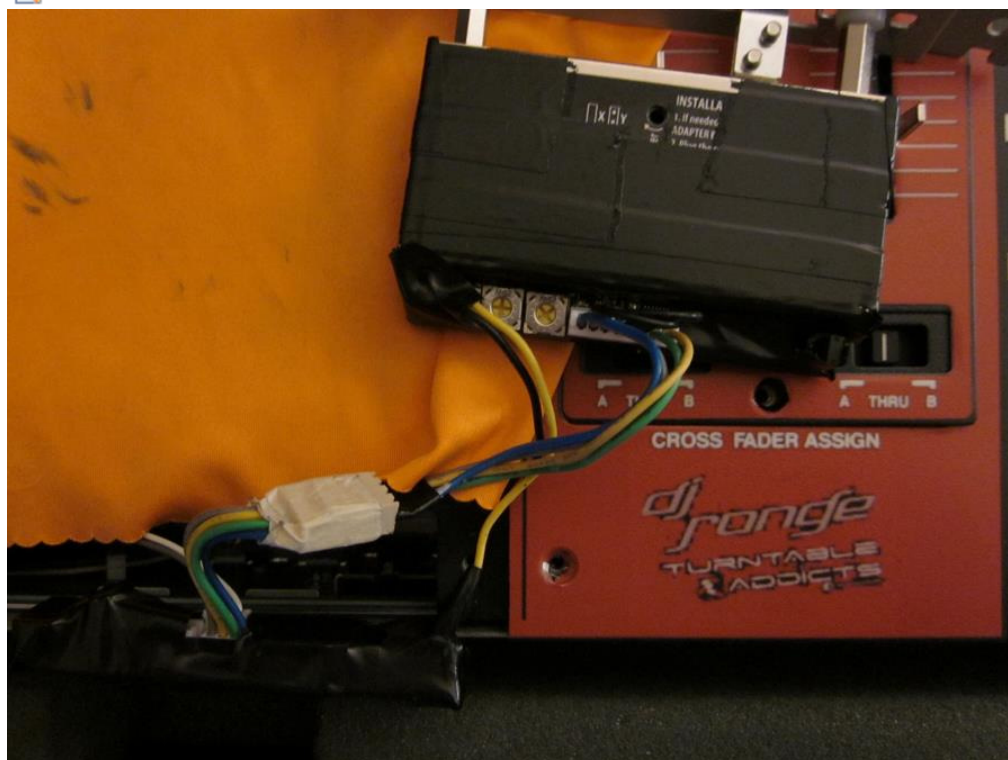
GREY <-> GREY
YELLOW <-> YELLOW
GREEN <-> GREEN
BLUE <-> BLUE

If the Cable connectors are facing BACK, (away from you) the wire connections between the Innofader cable and adapter board are as follows:


GREY <-> GREY
YELLOW <-> GREEN
GREEN <-> YELLOW
BLUE <-> BLUE

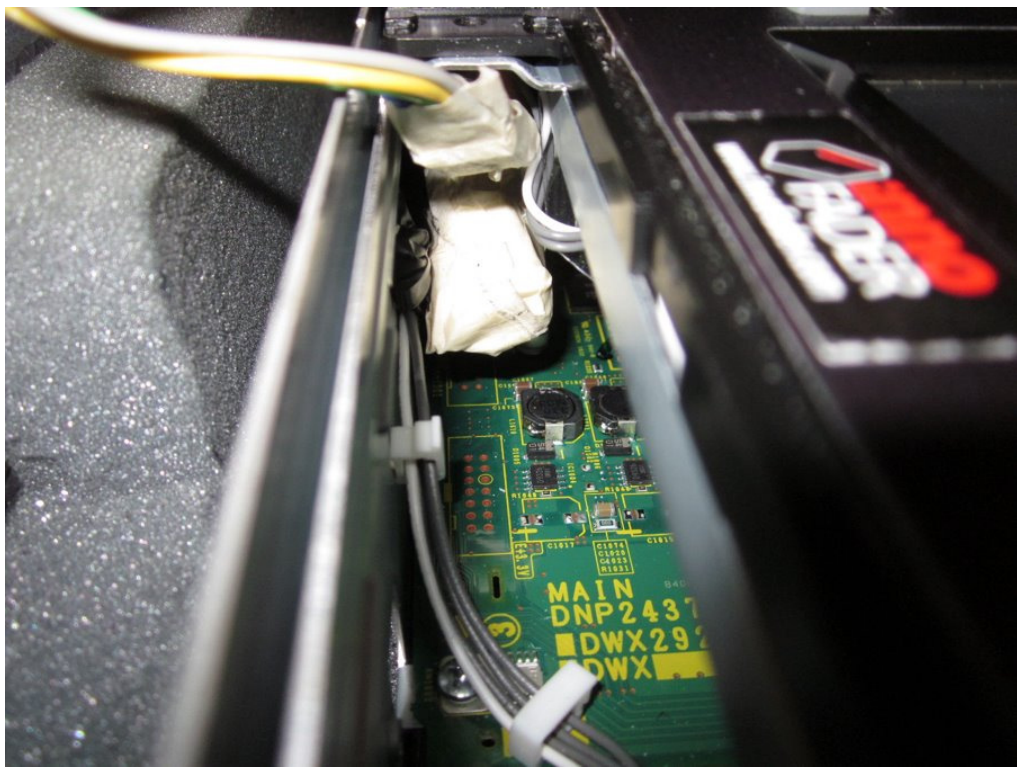
(Audioinnovate.com forum, similar but, Not the same as the DJM 400 installation.)

 Reduced: 56% of original size [900 x 675] - Click to view full image




Be sure to calibrate and adjust your curve and cut in time before installing. Refer to the Innofader website for instructions. <http://www.innofader.com/fitting.php>

 Reduced: 56% of original size [900 x 675] - Click to view full image




As a suggestion, attach double sided tape to the innofader circuit board and affix to the inside front wall of the mixer.

 Reduced: 56% of original size [900 x 675] - [Click to view full image](#)




(NOTE: You do not need to disassemble the front panel)
Insert the Innofader carefully.

 Reduced: 56% of original size [900 x 675] - [Click to view full image](#)




There is plenty of clearance from the main circuit board.

 Reduced: 56% of original size [900 x 675] - Click to view full image



SIDE NOTE: There is a minute gap between the fader cover and Fader plate; however, when screwing the cover back on, the Pioneer fader plate will bow slightly, allowing you to secure the cover. Do not over tighten.

 Reduced: 56% of original size [900 x 675] - Click to view full image



End Result!!!! There are two types of fader knobs that are available, use the type that sits higher on the stem. Contact support@audioinnovate.com if you do not have it, as you will need this fader cap in order to obtain enough clearance.

Any questions, you may contact me directly at, djronge@yahoo.com


Like my DJ page on [facebook.com/djronge](https://www.facebook.com/djronge)

Find my Mixtapes and Promos here www.soundcloud.com/djronge

[↑ TOP](#) [! REPORT](#)

[+ QUOTE](#) [" REPLY](#)

 **[DJ Cleberson](#)**


 Jan 2 2012, 11:57 PM

Post #2

Thanks DJ Ronge for the installation, it helped me very much, I will go postair to installation done by me.

Newbie



 Reduced: 64% of original size [800 x 600] - Click to view full image

Group: Members


Posts: 1

Joined: 15-December 11

Member No.: 29,823




INNOFADER DJM 2000 INSTALLATION.


 Reduced: 64% of original size [800 x 600] - Click to view full image

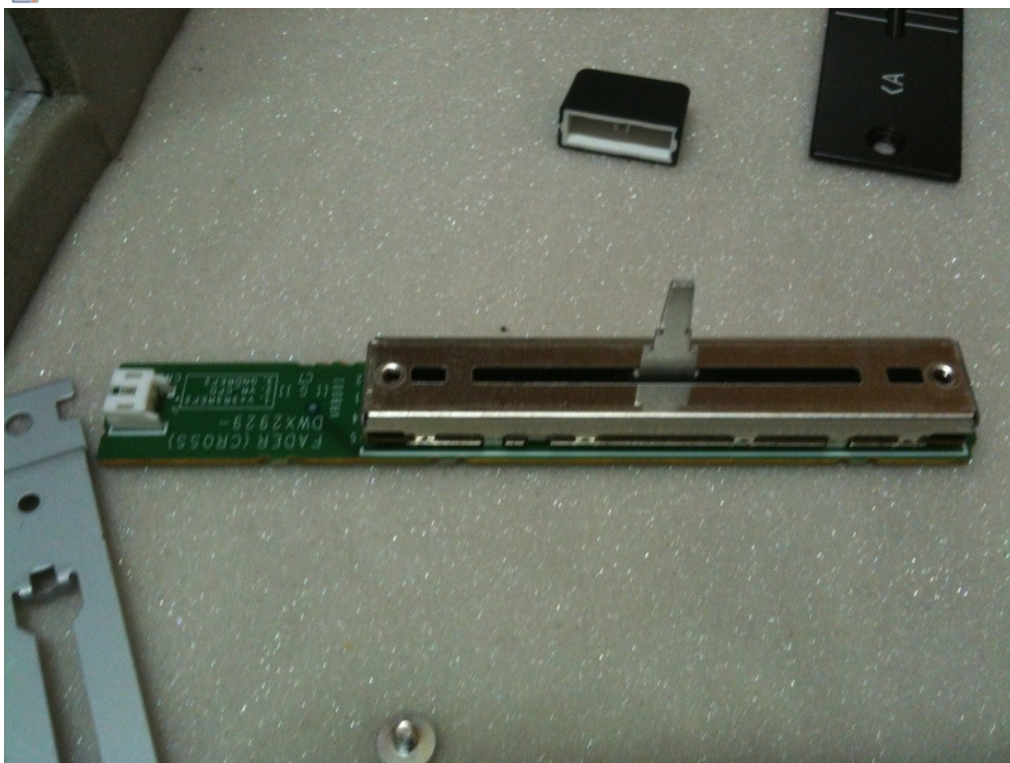


Withdraw the screws and the Knob of the crossfader.


 Reduced: 64% of original size [800 x 600] - Click to view full image



 Reduced: 64% of original size [800 x 600] - [Click to view full image](#)




The Crossfader is set free.

 Reduced: 64% of original size [800 x 600] - [Click to view full image](#)




You will be going to notice that there is no space to adjust the Innofader perfectly since he is much bigger than the original fader and so the squanderer of heat stays well in the front.

 Reduced: 64% of original size [800 x 600] - Click to view full image




Take away the front, soon he will see these 3 screws, take away them, the arrow it indicates for where the squanderer will be going to be imprisoned in the screw black internally, being a prisoner lateralmente in inside of the DJM giving space to an innofader.


 Reduced: 64% of original size [800 x 600] - Click to view full image

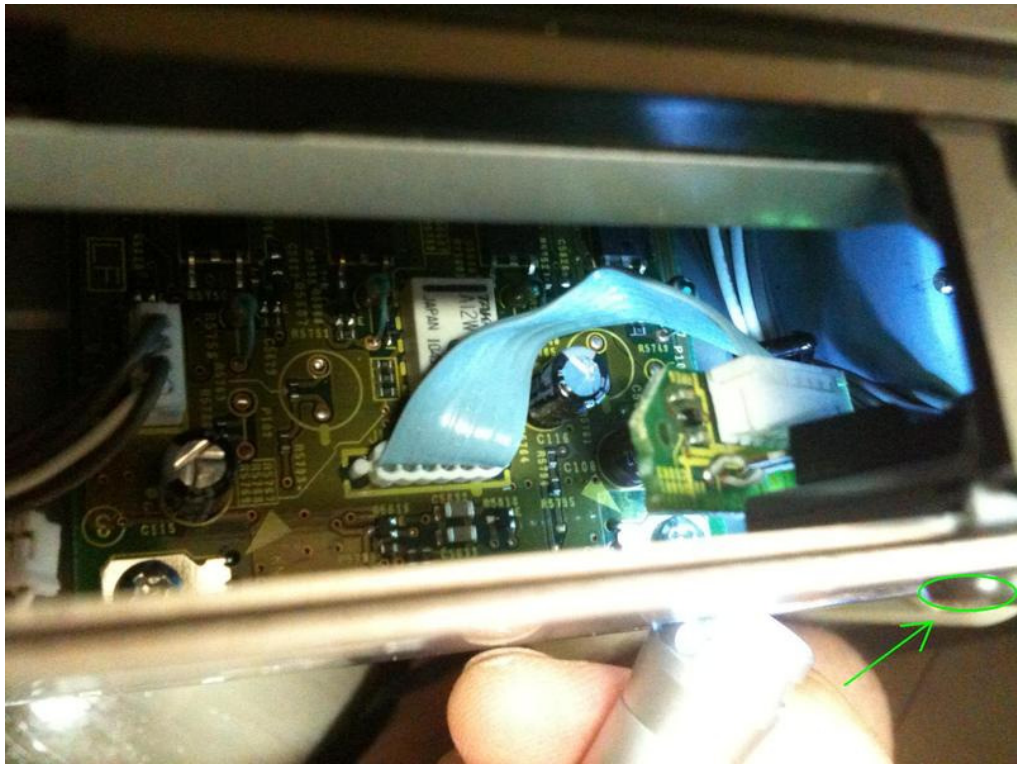


Loose squanderer.


 Reduced: 64% of original size [800 x 600] - Click to view full image

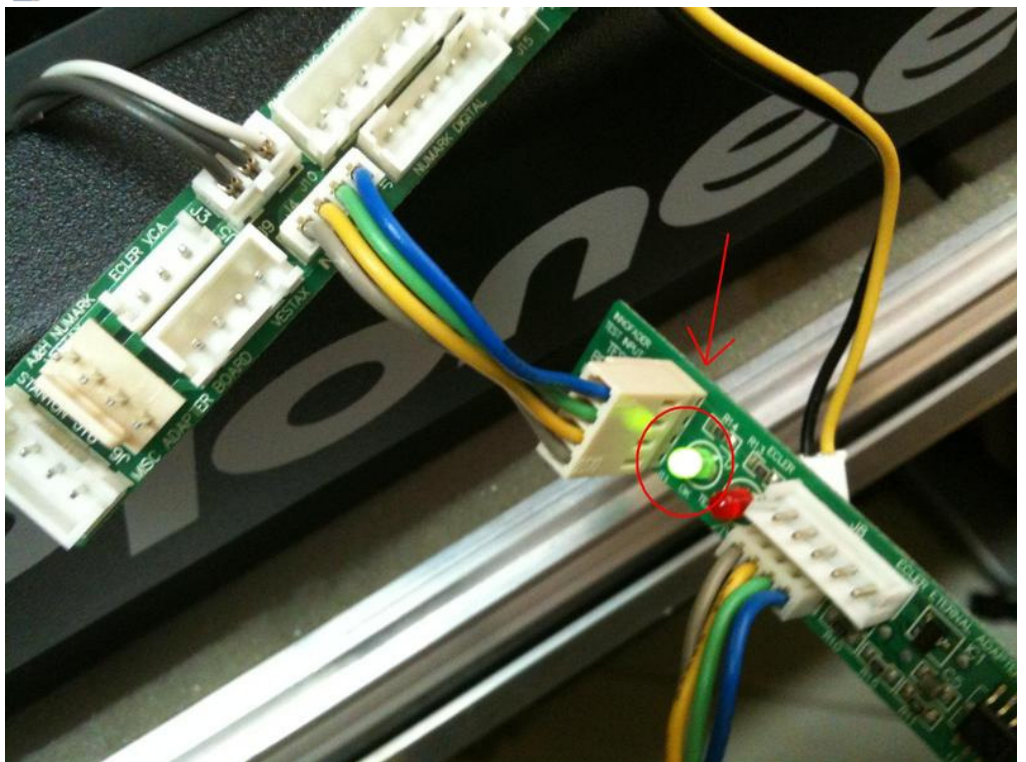


 Reduced: 64% of original size [800 x 600] - Click to view full image




Imprisoned side squanderer for the black screw, now we have the space applied for the innofader.

 Reduced: 64% of original size [800 x 600] - [Click to view full image](#)




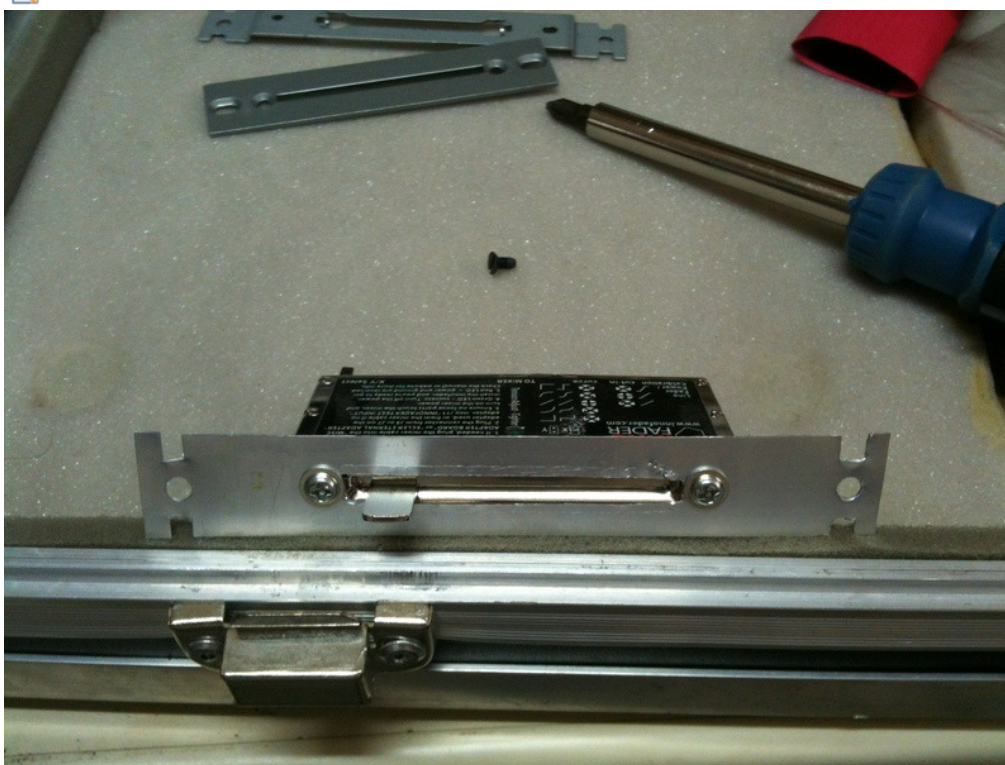
Connect the DJM 2000 in the entry J5 (Urei Korg), do it test of compatibility, green light completely ok.

 Reduced: 64% of original size [800 x 600] - [Click to view full image](#)




Fader Plate.


 Reduced: 64% of original size [800 x 600] - Click to view full image

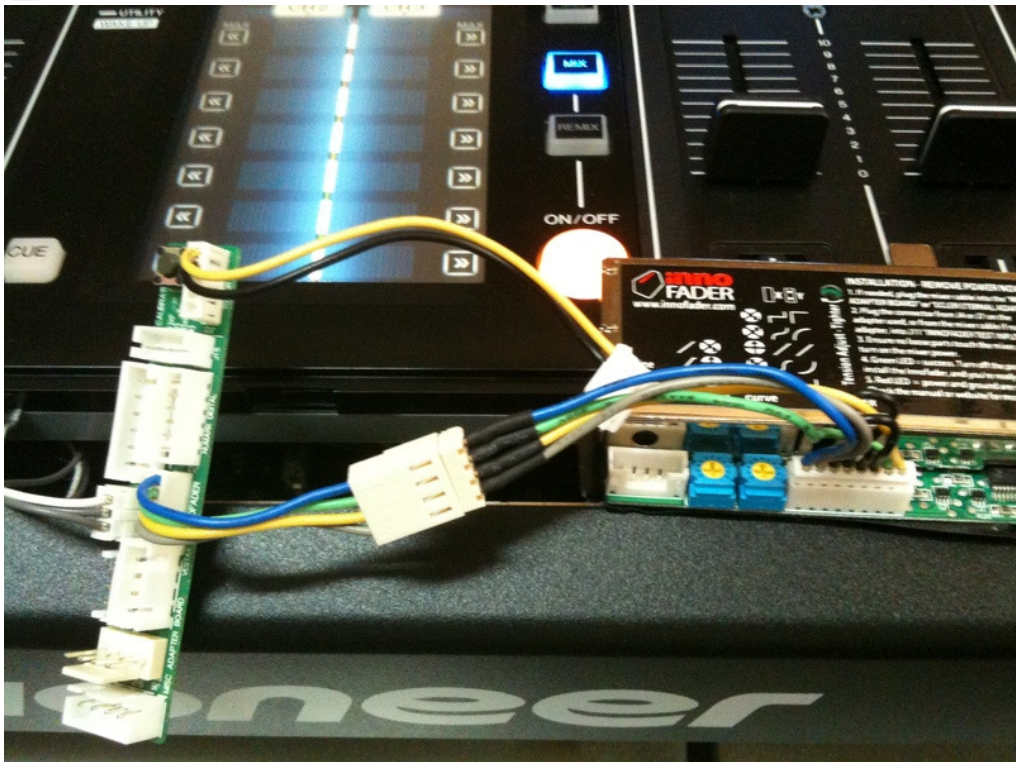


isolation.


 Reduced: 64% of original size [800 x 600] - Click to view full image




 Reduced: 64% of original size [800 x 600] - Click to view full image



Assembly.


 Reduced: 64% of original size [800 x 600] - Click to view full image



 Reduced: 64% of original size [800 x 600] - Click to view full image



completely ready.

 Reduced: 64% of original size [800 x 600] - Click to view full image



Thanks DJ Ronge, for the help here in Brazil.
 My DJ page on facebook [DJ Cleberson Ribeiro](#).
 Thanks Friends.

[↑ TOP](#) [! REPORT](#)

[+ EDIT](#) [+ QUOTE](#) [" REPLY](#)

« Next Oldest · **Innofader Help** · Next Newest »

[+ FASTREPLY](#) [+ ADDREPLY](#) [+ NEWTOPIC](#)

1 User(s) are reading this topic (0 Guests and 0 Anonymous Users)

1 Members: [DJ Cleberson](#)

Lo-Fi Version

Time is now: 4th January 2012 - 11:53 AM

Powered By IP.Board 2.3.6 © 2012 IPS, Inc.