

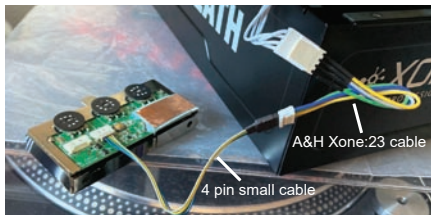
## A&H XONE 23/23C/43/43C INSTALLATION INSTRUCTIONS

It may seem that there are multiple ways to connect the crossfader but for sure **there is only one correct way!!!**

Please connect the crossfader using these two cables:

- 1) 4 pin small cable
- 2) A&H Xone:23 cable

Connect the cables in series as shown. You can reverse the crossfader by flipping the 4 pin small cable.



Another thing that may stump you at first is the crossfader mounting. A&H designed the plate for mounting the crossfader specifically so it can handle the 65mm hole spacing common to all Innofader models.

When installing the Innofader, please make sure to use the flat section of the mounting plate. Also use the short fat M3\*5mm screws to ensure a solid mount.

**Almost there!** Please also do the “Y CURVE MODE SETTING”. Most likely you purchased your A&H Xone mixer for mixing too, so using the Y curve mode setting will allow you to set the mix curve to your liking.

## Y CURVE MODE SETTING - FOR XONE 23/23C/43/43C MIXERS

Allows you to adjust the mix over the full length of the crossfader on mixers with dual VCA control

1) Knob starts in the middle.  
Press and hold the button.

2) Slide the knob to the left.  
Keep holding on to the button.

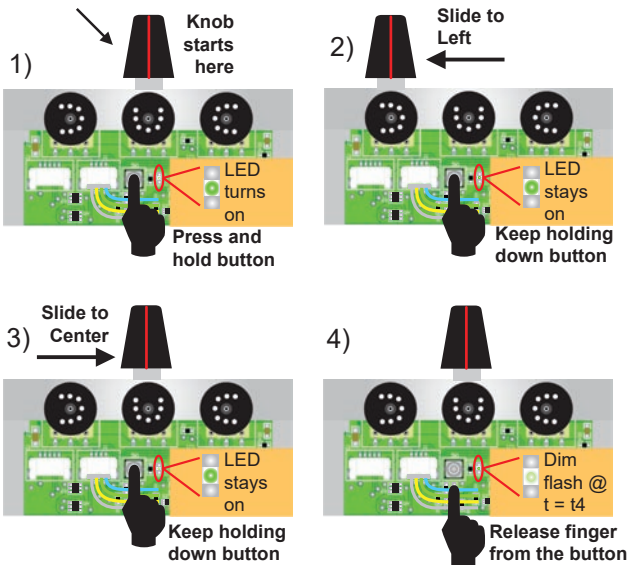
3) Slide the knob back to the center.  
Keep holding the button down.

4) Release the button.

When you are done, the PNP3 will reset itself and go through a sequence of flashing LEDs.

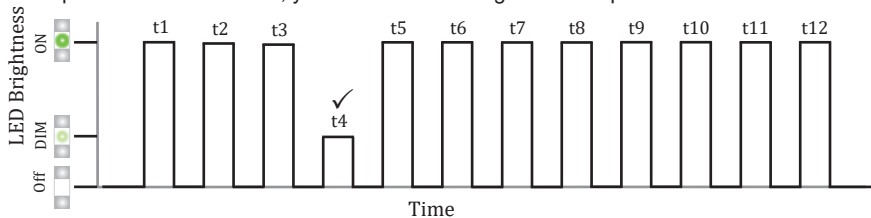
If this step was done correctly, the 4th of 12 LED flashes will be dimmer than the other flashes. See details next page.

**Please repeat this step if the 4th of 12 LED flashes is still bright!**

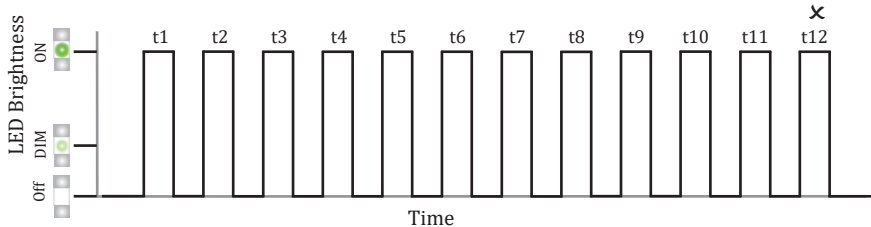


## 12 LED FLASH SEQUENCE AFTER Y CURVE MODE SETTING

If you did the adjustment correctly, immediately after calibration and every time you power on the Innofader, you'll see the following LED flash pattern. Note the DIM LED:



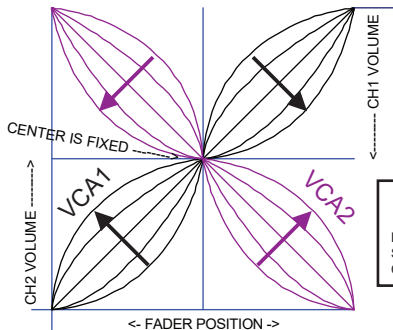
If you did NOT do the Y CURVE MODE setting correctly, the LED flash at time t3 will be bright. Please make sure to redo the Y CURVE MODE setting if this happens!



# COMPARISON OF "X" AND "Y" STYLE INNOFADER CURVES

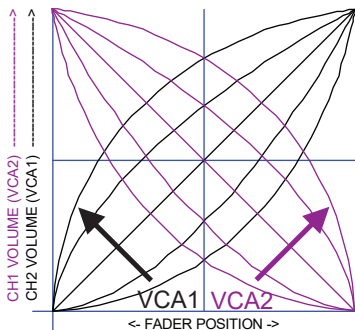
## "X" CURVE SETTING

ONLY OPTION FOR SINGLE VCA CONTROL



## "Y" CURVE SETTING

BEST OPTION FOR DUAL VCA CONTROL



**X CURVE FUNCTION:** VCA1 is used to control both CH1 and CH2. These are called "X" style curves because VCA1 and VCA2 curves resemble the letter "X" when combined.

All current Innofaders have this design as default. It is always guaranteed to work because many newer digital mixers and controllers often use a single VCA1 signal to control both CH1 and CH2 volume as illustrated above. The center point is fixed to make sure CH1 and CH2 have the same curve

All fader connections using a 3 pin cable adapter require the X curve setting.

**Y CURVE FUNCTION:** VCA1 controls CH2 and VCA2 controls CH1. These are called "Y" style curves because VCA1 and VCA2 curves resemble the letter "Y" when combined.

Since the adjustment works through the entire length of the fader, it allows you to have full control over the CH1/CH2 overlap when mixing. You should take advantage of this capability if you use the crossfader for mixing and your mixer uses separate VCA signals for both sides of the crossfader.

Your A&H Xone mixer uses separate VCA controls for CH1 and CH2 so it can take advantage of this Y curve setting.