

## Y CURVE MODE SETTING - WORKS FOR MOST 4 PIN VCA CONNECTIONS

Allows you to adjust the mix over the full length of the crossfader on mixers with dual VCA control

1) Knob starts in the middle. Press and hold the button.

2) Slide the knob to the left. Keep holding on to the button.

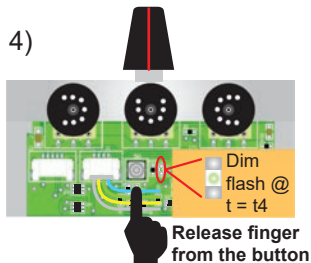
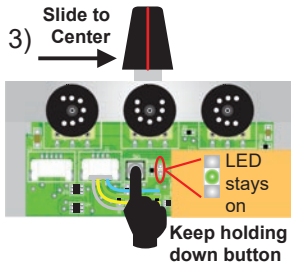
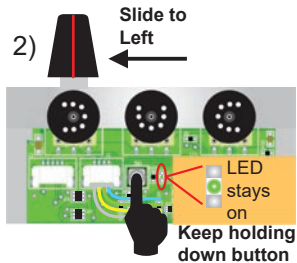
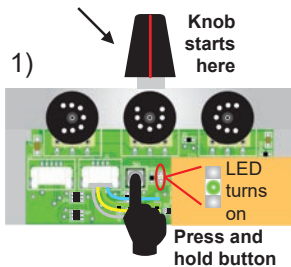
3) Slide the knob back to the center. Keep holding the button down.

4) Release the button.

When you are done, the PNP3 will reset itself and go through a sequence of flashing LEDs.

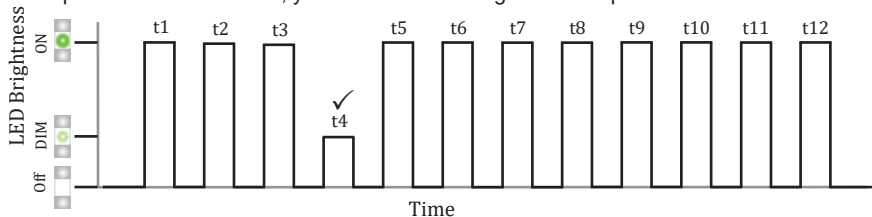
If this step was done correctly, the 4th of 12 LED flashes will be dimmer than the other flashes. See details next page.

**Please repeat this step if the 4th of 12 LED flashes is still bright!**

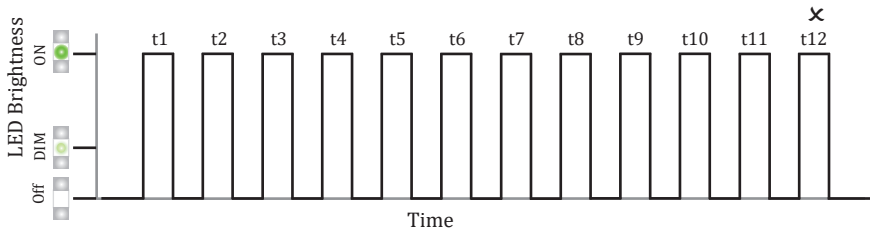


## 12 LED FLASH SEQUENCE AFTER Y CURVE MODE SETTING

If you did the adjustment correctly, immediately after calibration and every time you power on the Innofader, you'll see the following LED flash pattern. Note the DIM LED:



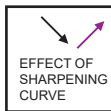
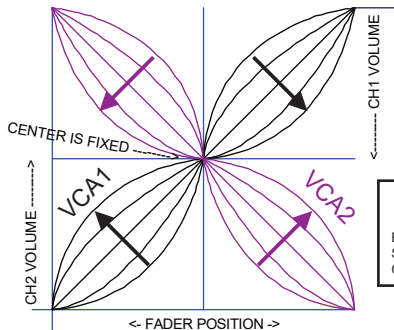
If you did NOT do the Y CURVE MODE setting correctly, the LED flash at time t3 will be bright. Please make sure to redo the Y CURVE MODE setting if this happens!



# COMPARISON OF "X" AND "Y" STYLE INNOFADER CURVES

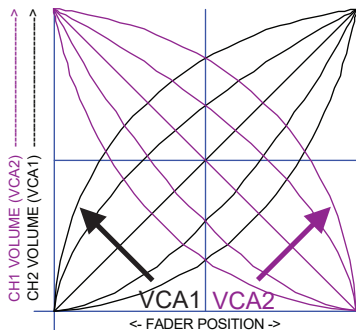
## "X" CURVE SETTING

ONLY OPTION FOR SINGLE VCA CONTROL



## "Y" CURVE SETTING

BEST OPTION FOR DUAL VCA CONTROL



**X CURVE FUNCTION:** VCA1 is used to control both CH1 and CH2. These are called "X" style curves because VCA1 and VCA2 curves resemble the letter "X" when combined.

All current InnoFaders have this design as default. It is always guaranteed to work because many newer digital mixers and controllers often use a single VCA1 signal to control both CH1 and CH2 volume as illustrated above. The center point is fixed to make sure CH1 and CH2 have the same curve

**All fader connections using a 3 pin cable adapter require the X curve setting.**

**Y CURVE FUNCTION:** VCA1 controls CH2 and VCA2 controls CH1. These are called "Y" style curves because VCA1 and VCA2 curves resemble the letter "Y" when combined.

Since the adjustment works through the entire length of the fader, it allows you to have full control over the CH1/CH2 overlap when mixing. You should take advantage of this capability if you use the crossfader for mixing and your mixer uses separate VCA signals for both sides of the crossfader.

**Most mixers with 4 pin connectors use dual VCA controls so they can take advantage of this Y curve setting.**