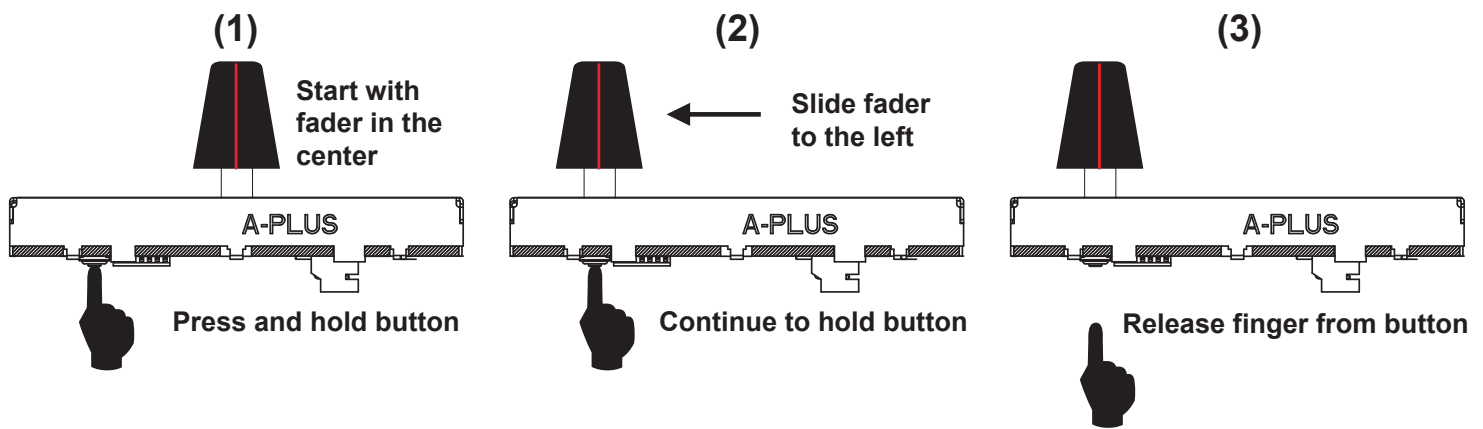


MINI INNOFADER NANO ADJUSTMENT PROCEDURE

Please note: the mini Innofader nano included in your Stanton STX coming out of the factory has approximately 0.7mm dead space on each side of the fader. For optimal scratching we **HIGHLY RECOMMEND** that you follow the below procedure. After following this procedure, the XFADER CUT-IN dial allows you to achieve virtually no dead space. It only takes a few minutes and will greatly improve the performance of your mini Innofader nano already installed!

STEP #1: Left decrease lag

Start by making sure that you are getting cutting action on the left side of the crossfader and toggle the FADER REVERSE switch if necessary. Repeat the below procedure 4 times. Then check the cut point by cutting on the left side and adjusting the XFADER CUT-IN dial on the STX until you achieve the tightest possible cut without bleeding. If you notice that there is still some gap, repeat this step and check until it is possible to have virtually no gap.



STEP #2: Right decrease lag

Start by making sure that you are getting cutting action on the right side of the crossfader and toggle the FADER REVERSE switch if necessary. Repeat the below procedure 4 times. Then check the cut point by cutting on the right side and adjusting the XFADER CUT-IN dial on the STX until you achieve the tightest possible cut without bleeding. If you notice that there is still some gap, repeat this step and check until it is possible to have virtually no gap.

