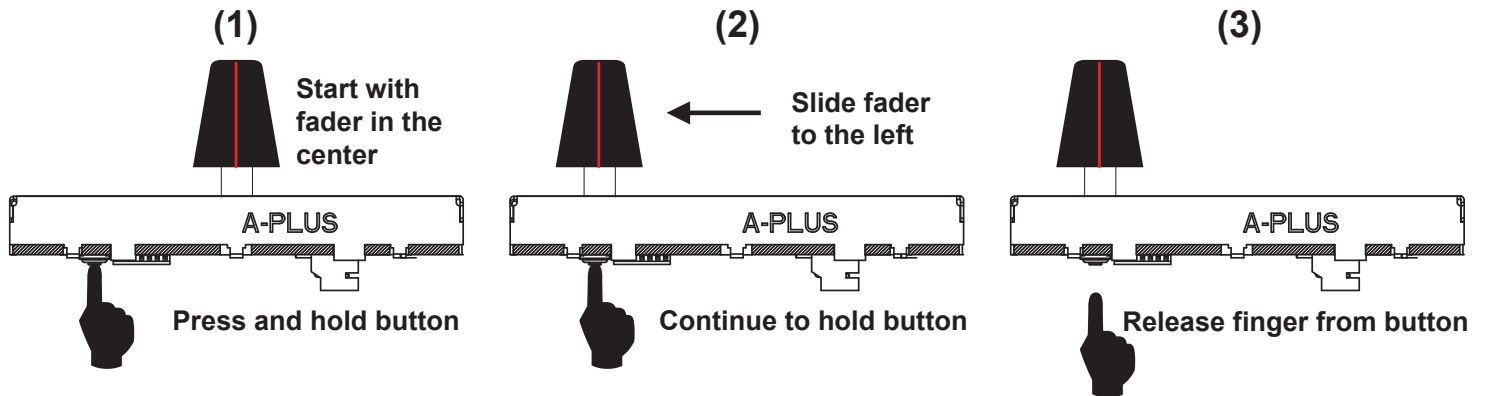


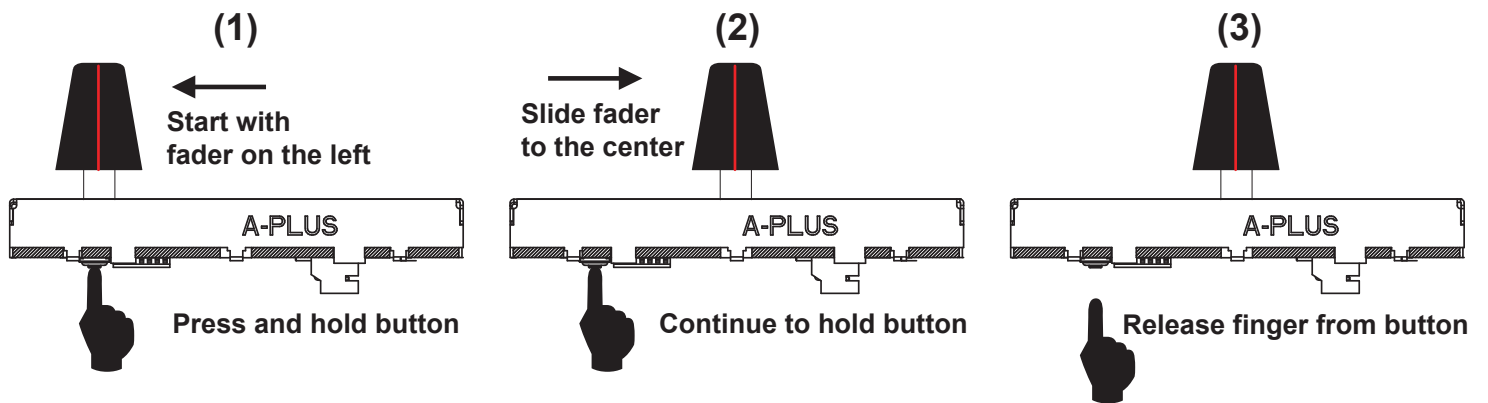
MINI INNOFADER NANO/PRO FINE TUNE PROCEDURE

If you are frequently switching back and forth from the Nano to the Pro or reversing the output, you can use this to balance the cut points on both sides of both faders.

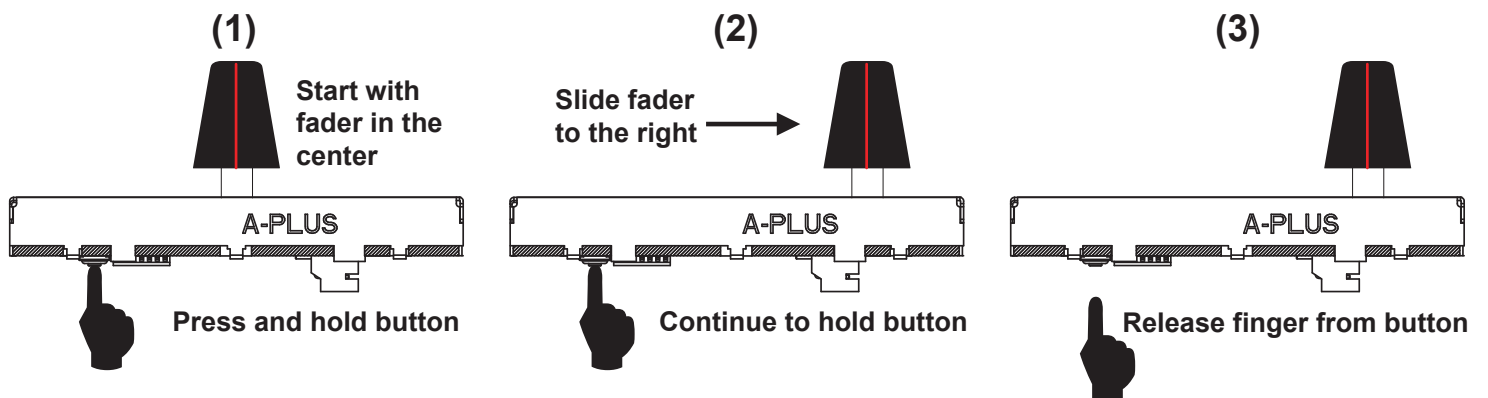
Left decrease lag - decreases dead space on the left side by a small amount



Left increase lag - increases dead space on the left side by a small amount



Right decrease lag - decreases dead space on the right side by a small amount



Right increase lag - increases dead space on the right side by a small amount

